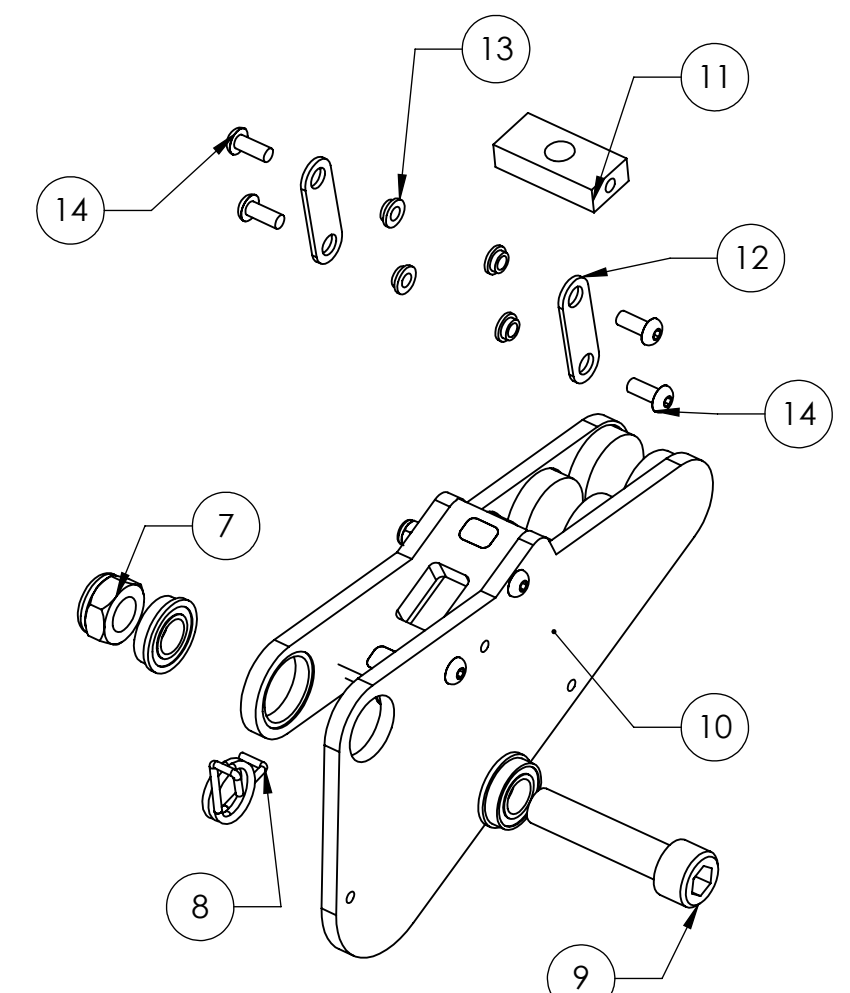
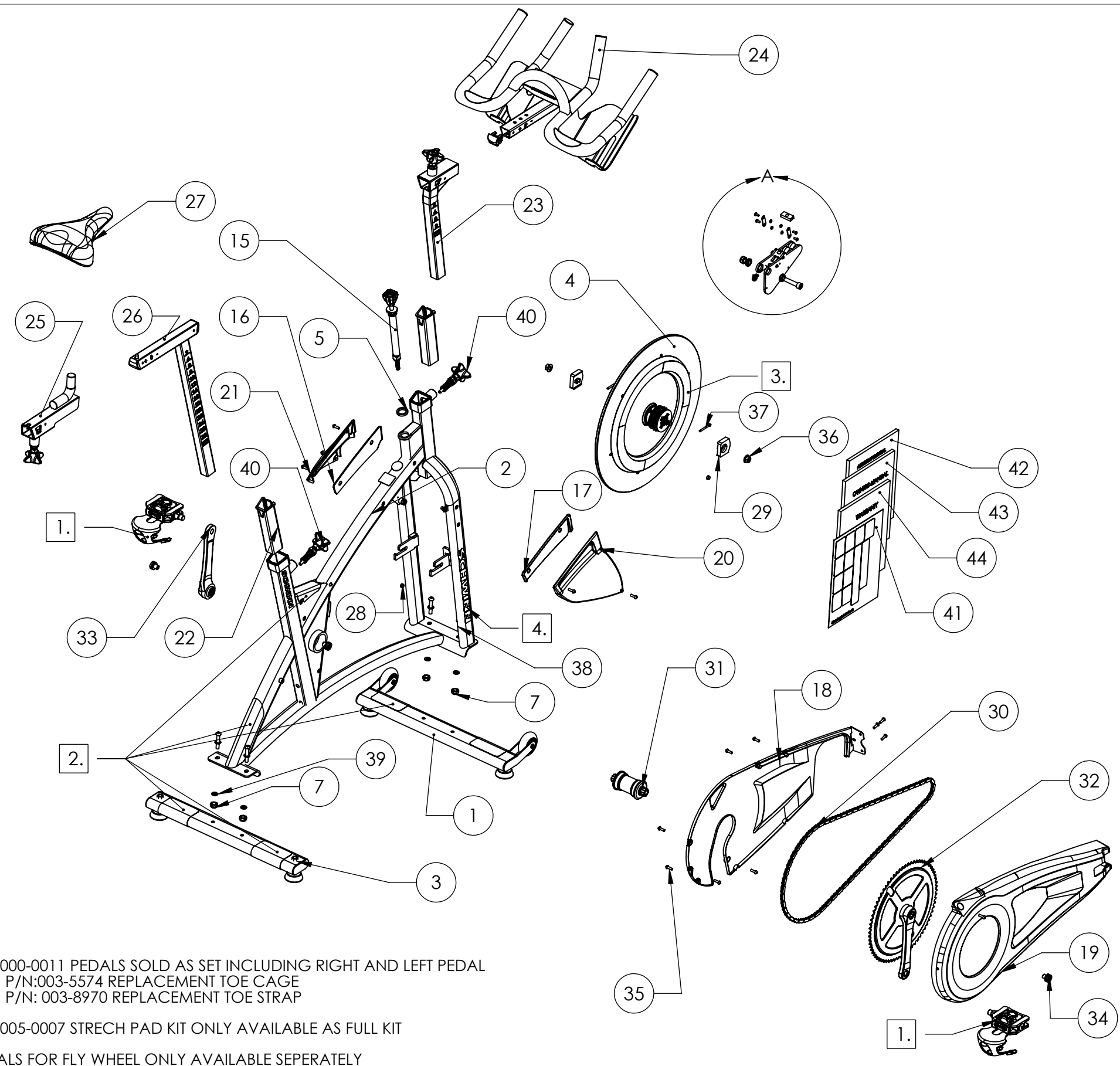


REV.	DESCRIPTION	DATE	APPROVED
A	RE-RELEASE AS STAIRMASTER PRODUCT	10/4/2011	



DETAIL A  
SCALE 1:2

NOTES:

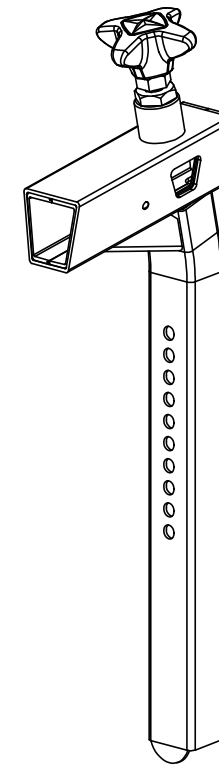
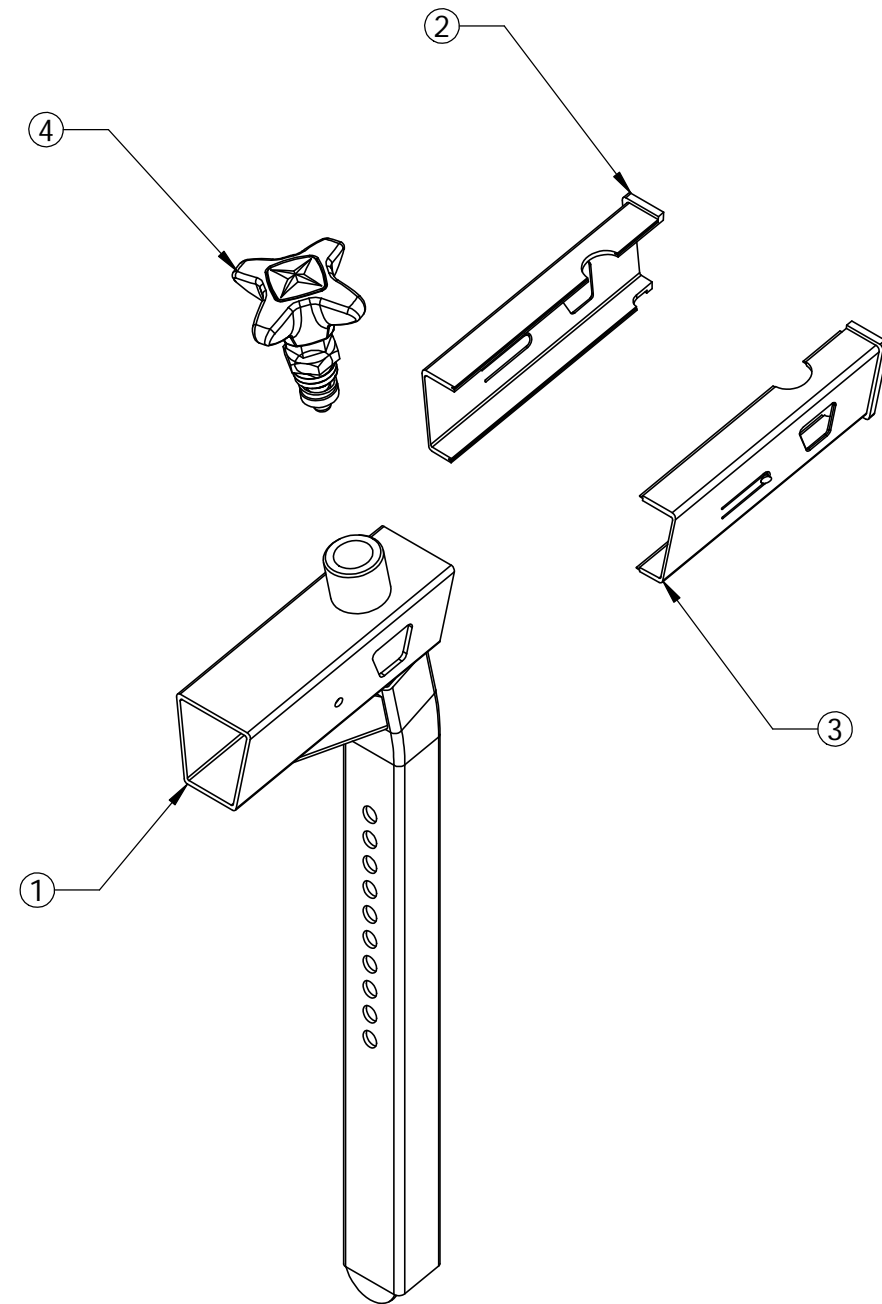
- 1. P/N: 000-0011 PEDALS SOLD AS SET INCLUDING RIGHT AND LEFT PEDAL  
P/N:003-5574 REPLACEMENT TOE CAGE  
P/N: 003-8970 REPLACEMENT TOE STRAP
- 2. P/N: 005-0007 STRECH PAD KIT ONLY AVAILABLE AS FULL KIT
- 3. DECALS FOR FLY WHEEL ONLY AVAILABLE SEPERATELY  
P/N: 003-5670 QTY. 1  
003-5549 QTY. 2  
003-5819 QTY.1  
003-5558 QTY. 2
- 4. P/N: 902-6066 FRAME DECALS ONLY AVAILABLE AS KIT

**PROPRIETARY AND CONFIDENTIAL**  
THE INFORMATION CONTAINED IN THIS DRAWING IS THE SOLE PROPERTY OF STAIRMASTER OR CORE FITNESS. ANY REPRODUCTION IN PART OR AS A WHOLE WITHOUT THE WRITTEN PERMISSION OF STAIRMASTER OR CORE FITNESS IS PROHIBITED.

THIRD ANGLE PROJECTION:	NAME	DATE	StairMaster	
	MODELED	J.WATT	9/3/2008	MODEL DESCRIPTION: <b>SCHWINN AC SPORT FULL ASSY</b>
PRIMARY DIMENSIONS GIVEN IN MILLIMETERS SECONDARY DIMENSIONS GIVEN IN INCHES. UNLESS OTHERWISE SPECIFIED MATCH 3D GEOMETRY ± TWO PLACE DECIMAL.  TOLERANCES: ANGULAR: ± 1° WHOLE MEASUREMENTS ± 1. ONE PLACE DECIMAL ± .3 TWO PLACE DECIMAL ± .15	DRAWN	M. BIXBY	4/5/2011	
	ENG APPR.			3D MODEL: P/N: 2:Engineering\Approved Product\001-6000(PORT)\           001-0600
	Q.A. APPR.			DRAWING: P/N: 2:Engineering\Approved Product\001-6000(PORT)\           001-0600
	MATERIAL:			REV. D
	COLOR:			REV. D
	FINISH:			
	VENDOR PN:			SCALE: 1:50 CONFIG:001-0600 SER. SIZE: B SHEET: 1 OF 1

001-600-D BOM			
ITEM NO.	PART NO.	QTY.	DESCRIPTION
1	001-0773	1	FRONT STABLIZER ASSY
2	001-0772	1	FRAME WLDMT ASSY
3	001-0775	1	REAR STABLIZER ASSY
4	001-0565	1	FLYWHEEL W/ SMART RELEASE, ASSY
5	001-0744	1	SPACER, BRAKE ADJUSTMENT KNOB
6	902-6064	2	WSH-FLAT M8 NARROW SS
7	902-4172	5	NUT NYLON INSERT LOCKING M10-1.5 H10
8	001-0752	1	TORSION SPRING, BRAKE
9	902-5701	1	M10-1.5x45 SOCKET HEAD CAP SCREW
10	001-0750	1	BRAKE CARRIAGE ASSY
11	001-0535	1	THREADED BRAKE ADJUSTMENT NUT
12	001-0540	2	LINK, BRAKE ADJUSTMENT SIDE
13	001-0541	4	BRONZE BUSHING, BRAKE ADJUSTMENT LINK
14	902-4986	4	SCW-BHCS M4x0.7x10 SS
15	005-0001	1	BRAKE ADJ.T KNOB, COARSE THREAD ASSY
16	003-5707	1	FENDER GASKET LEFT
17	003-5706	1	FENDER GASKET RIGHT
18	002-2832	1	AC INNER CHAINGUARD
19	002-2837	1	AC OUTER CHAINGUARD ASSY
20	002-2333	1	AC RIGHT SIDE FENDER
21	002-2334	1	AC LEFT SIDE FENDER
22	001-0714	2	SLEEVE, STEEL BIKE
23	001-0740	1	HANDLEBAR FORE-AFT ASSY
24	001-0813	1	HANDLEBAR WELDMENT - STEEL BIKE HI END
25	002-2302	1	SEAT FORE/AFT ASSY
26	002-2257	1	SEAT HEIGHT ASSY
27	003-5821	1	VELO SADDLE, VELO# VL-3061
28	001-0778	1	MAGNET, SPEED SENSOR
29	000-0004	2	CHAIN TENSION BLOCK
30	002-2782	1	CHAIN, 1/2" X 3/32", 122 LINKS
31	001-0687	1	ISIS BB, 68 X 113mm
32	002-2779	1	RIGHT CRANK ARM, ASSY
33	002-2780	1	LEFT CRANK ARM, ISIS
34	80044	4	CRANK BOLT 8MM HEX FOR ISIS
35	902-5552	19	SCW-RHP M5x0.8x16 SS
36	003-2357	2	M10-1.5 HEX FLANGE NUT ZINC
37	902-5646	2	SCW-SHCS M4-0.7x40 SS
38	902-5033	4	SCW-BHCS M8x1.25x45 SS
39	902-6065	8	WSH-FLAT M8 REGULAR SS
40	002-2265	2	POP PIN ASSY
41	003-5751	1	WARNING LABEL SHEET
42	001-7330	1	SCH AC BIKES ASSEMBLY MANUAL
43	001-7331	1	SCH AC BIKES OWNERS MANUAL
44	001-7333	1	SCH AC BIKES WARANTY TERMS SHEET

REV.	DESCRIPTION	DATE	APPROVED
B	RE-RELEASE AS STAIRMASTER PRODUCT	10/5/2011	MDB



ITEM	PART NO.	QTY.	DESCRIPTION
1	001-0739	1	HANDLEBAR FORE-AFT WDMT, STEEL
2	001-0816	1	HANDLEBAR FORE/AFT SLEEVE - STEEL BIKE - RIGHT
3	001-0817	1	HANDLEBAR FORE/AFT SLEEVE - STEEL BIKE - LEFT
4	001-0808	1	POP PIN ASSY- SHORT

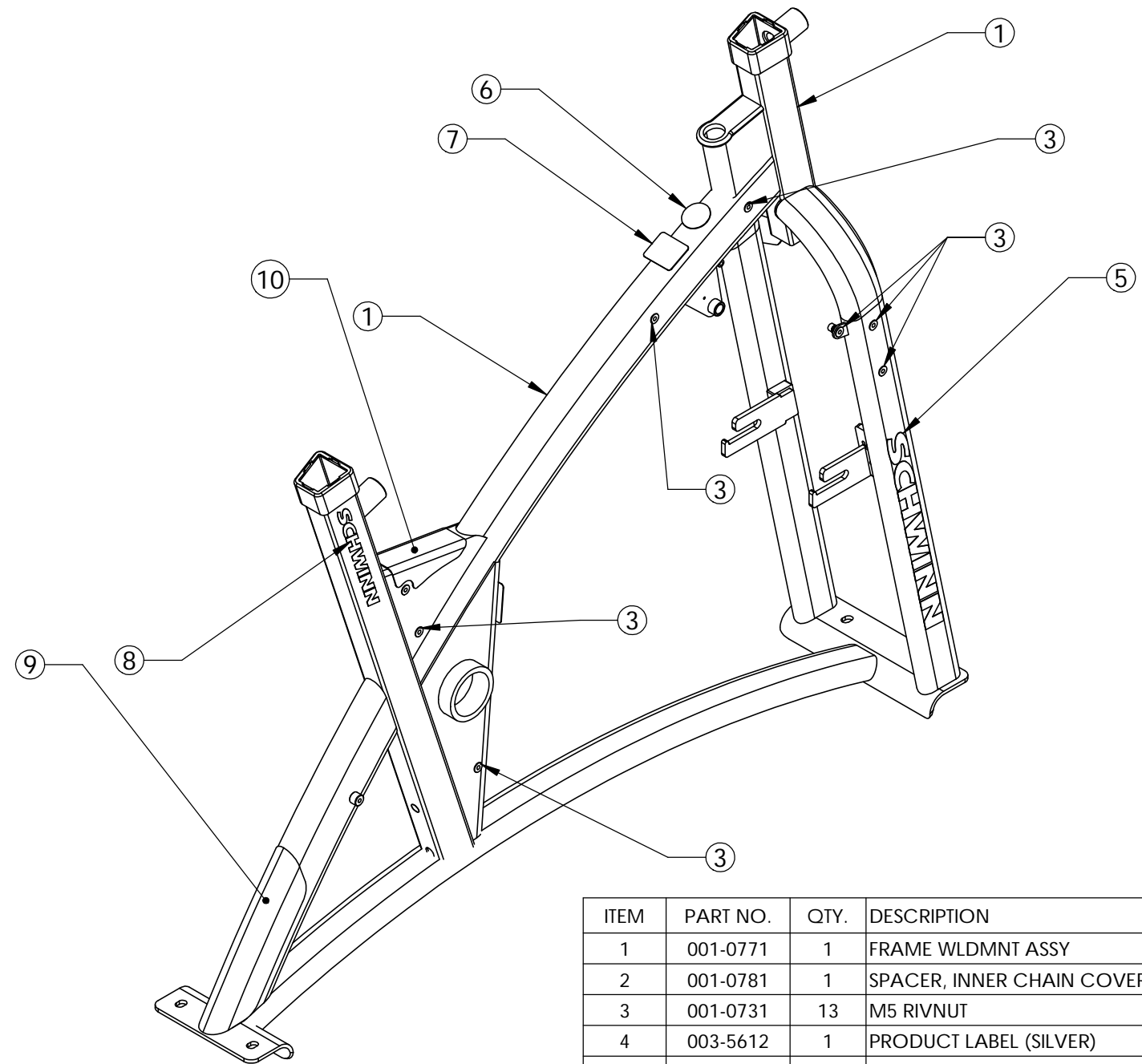
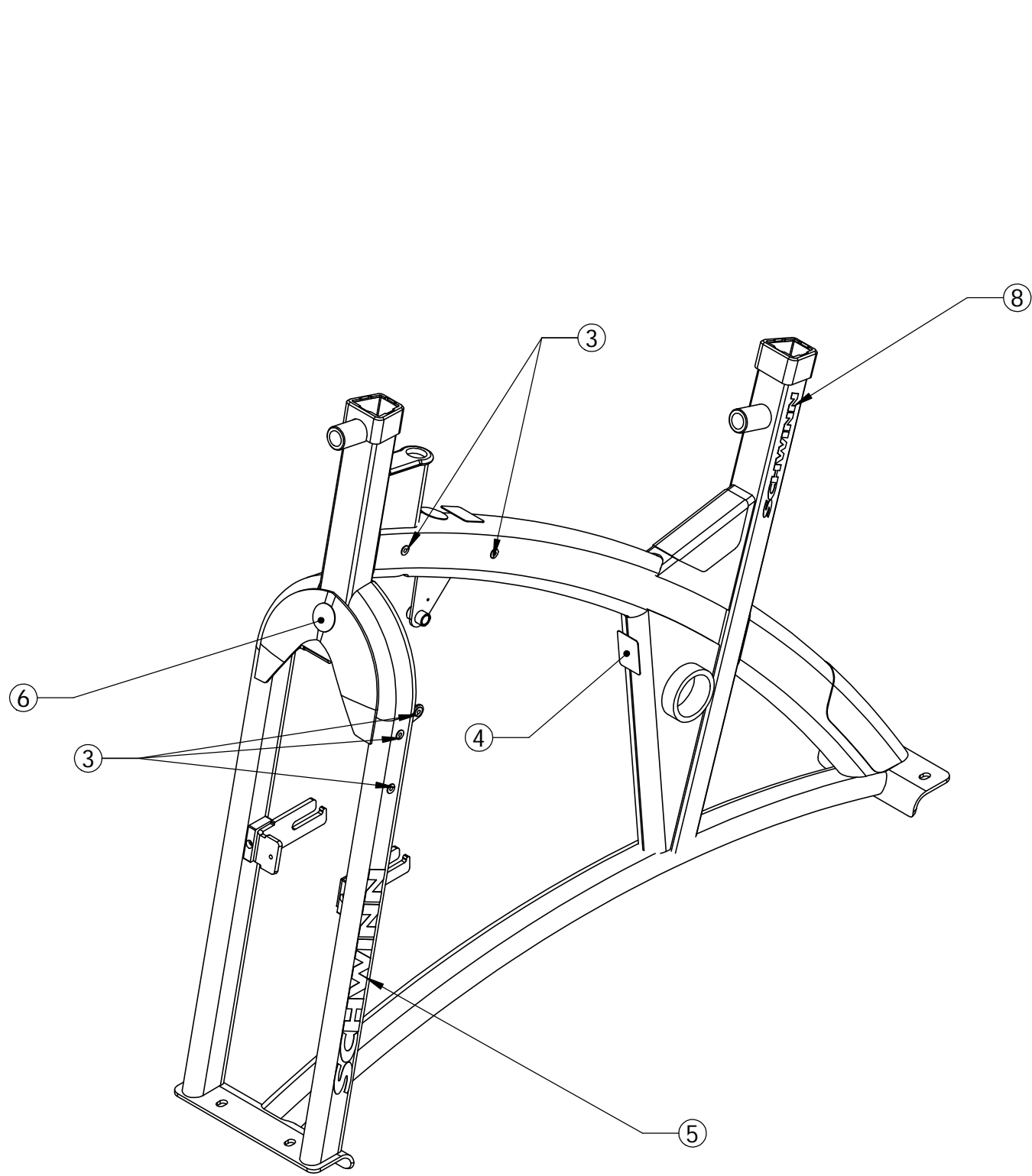
THIRD ANGLE PROJECTION:	NAME	DATE	
ENG/DRW	J.WATT	10/29/2008	
DRAWN	M. BIXBY	3/3/2009	
ENG APPR. SERVICEABLE:			
MATERIAL: SEE INDV PARTS	MODEL DESCRIPTION:		<b>HANDLEBAR FORE-AFT ASSY</b>
COLOR: SEE INDV PARTS	3D MODEL: P:\3D E:\stairmaster\body\001-0740		
FINISH: SEE INDV PARTS	DRAWING: P:\3D E:\stairmaster\body\001-0740		REV. B
VENDOR PN:	001-0740		REV. B
SCALE: 1:3		CONFIG: Default	SIZE: B SHEET: 1 OF 1

PROPRIETARY AND CONFIDENTIAL  
 THE INFORMATION CONTAINED IN THIS DRAWING IS THE SOLE PROPERTY OF STAIRMASTER OR CORE FITNESS. ANY REPRODUCTION IN PART OR AS A WHOLE WITHOUT THE WRITTEN PERMISSION OF STAIRMASTER OR CORE FITNESS IS PROHIBITED.

PRIMARY DIMENSIONS GIVEN IN MILLIMETERS SECONDARY DIMENSIONS GIVEN IN INCHES. UNLESS OTHERWISE SPECIFIED MATCH 3D GEOMETRY ± TWO PLACE DECIMAL.

TOLERANCES:  
 ANGULAR: ± 1°  
 WHOLE MEASUREMENTS ± 1.  
 ONE PLACE DECIMAL ± .3  
 TWO PLACE DECIMAL ± .15

REV.	DESCRIPTION	DATE	APPROVED
A	RE-RELEASE AS STAIRMASTER PRODUCT	10/5/2011	MDB



ITEM	PART NO.	QTY.	DESCRIPTION
1	001-0771	1	FRAME WLDMNT ASSY
2	001-0781	1	SPACER, INNER CHAIN COVER STEEL BIKE
3	001-0731	13	M5 RIVNUT
4	003-5612	1	PRODUCT LABEL (SILVER)
5	003-5547	2	AC FORK DECAL
6	002-2444	2	30mm SCHWINN QUALITY SEAL
7	002-2439	1	iBOOK DECAL
8	003-5548	2	AC SEAT POST DECAL
9	002-2373	1	REAR STRETCH PAD
10	003-5555	1	STRETCH PAD TOP STEP

THIRD ANGLE PROJECTION:

PRIMARY DIMENSIONS GIVEN IN MILLIMETERS SECONDARY DIMENSIONS GIVEN IN INCHES. UNLESS OTHERWISE SPECIFIED MATCH 3D GEOMETRY ± TWO PLACE DECIMAL.

TOLERANCES:  
ANGULAR: ± 1°  
WHOLE MEASUREMENTS ± 1.  
ONE PLACE DECIMAL ± .3  
TWO PLACE DECIMAL ± .15

**PROPRIETARY AND CONFIDENTIAL**  
THE INFORMATION CONTAINED IN THIS DRAWING IS THE SOLE PROPERTY OF STAIRMASTER OR CORE FITNESS. ANY REPRODUCTION IN PART OR AS A WHOLE WITHOUT THE WRITTEN PERMISSION OF STAIRMASTER OR CORE FITNESS IS PROHIBITED.

NAME	DATE
ENG/DRW J. WATT	10/27/2008
DRAWN M. BIXBY	2/9/2009
ENG APPR.	
SERVICEABLE:	
MATERIAL: SEE INDV PARTS	
COLOR: SEE INDV PARTS	
FINISH: SEE INDV PARTS	
VENDOR PN:	

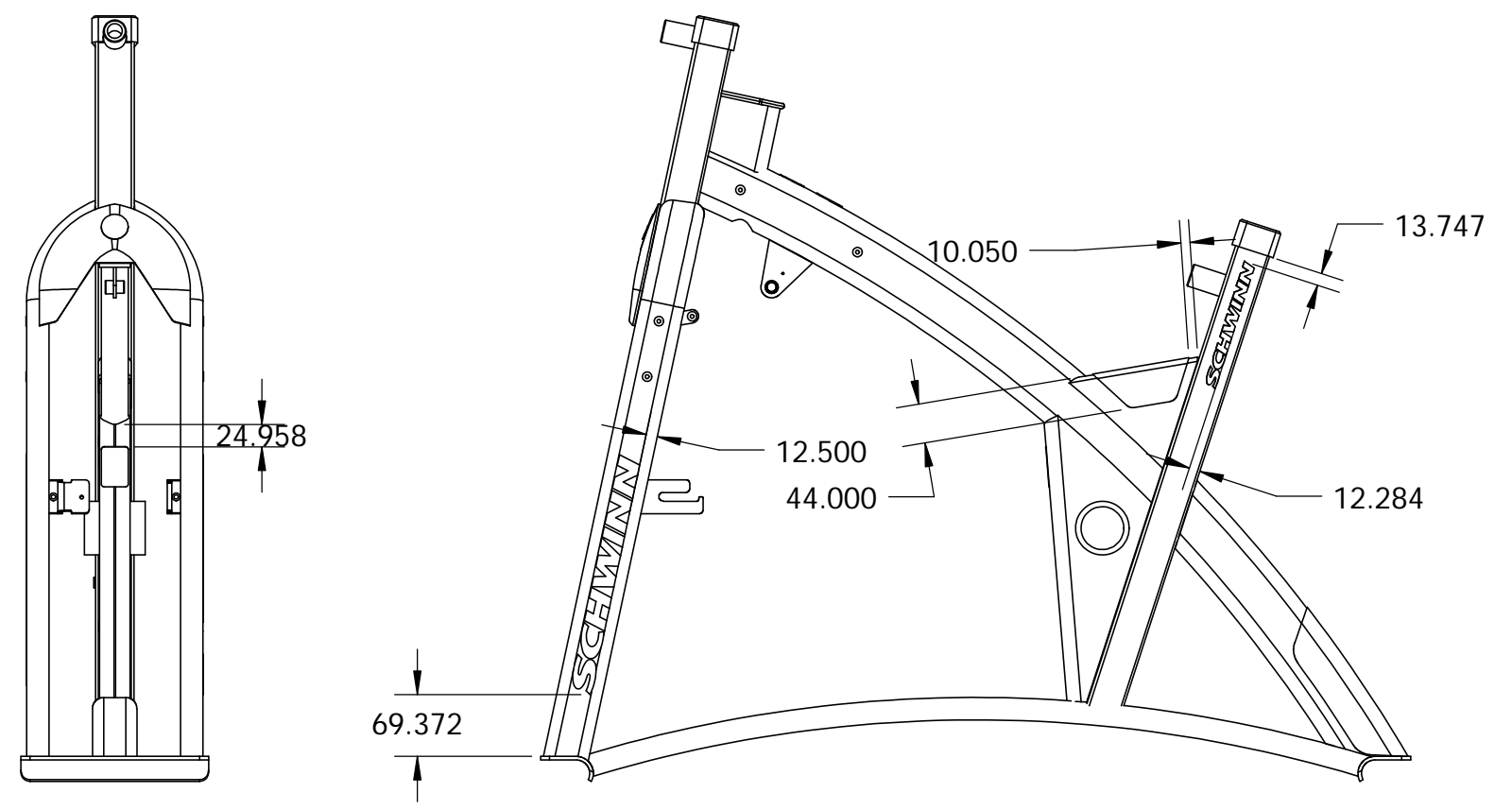
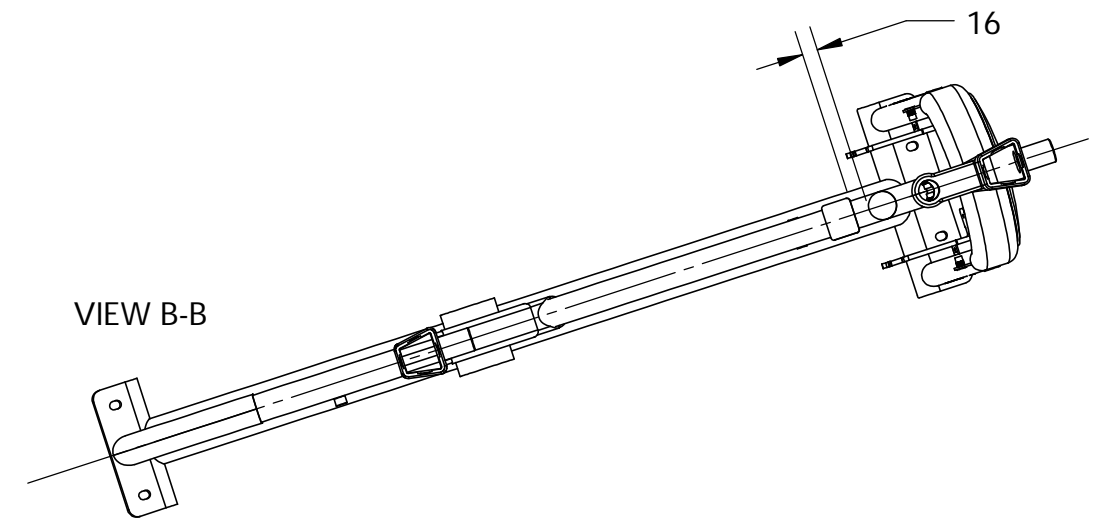
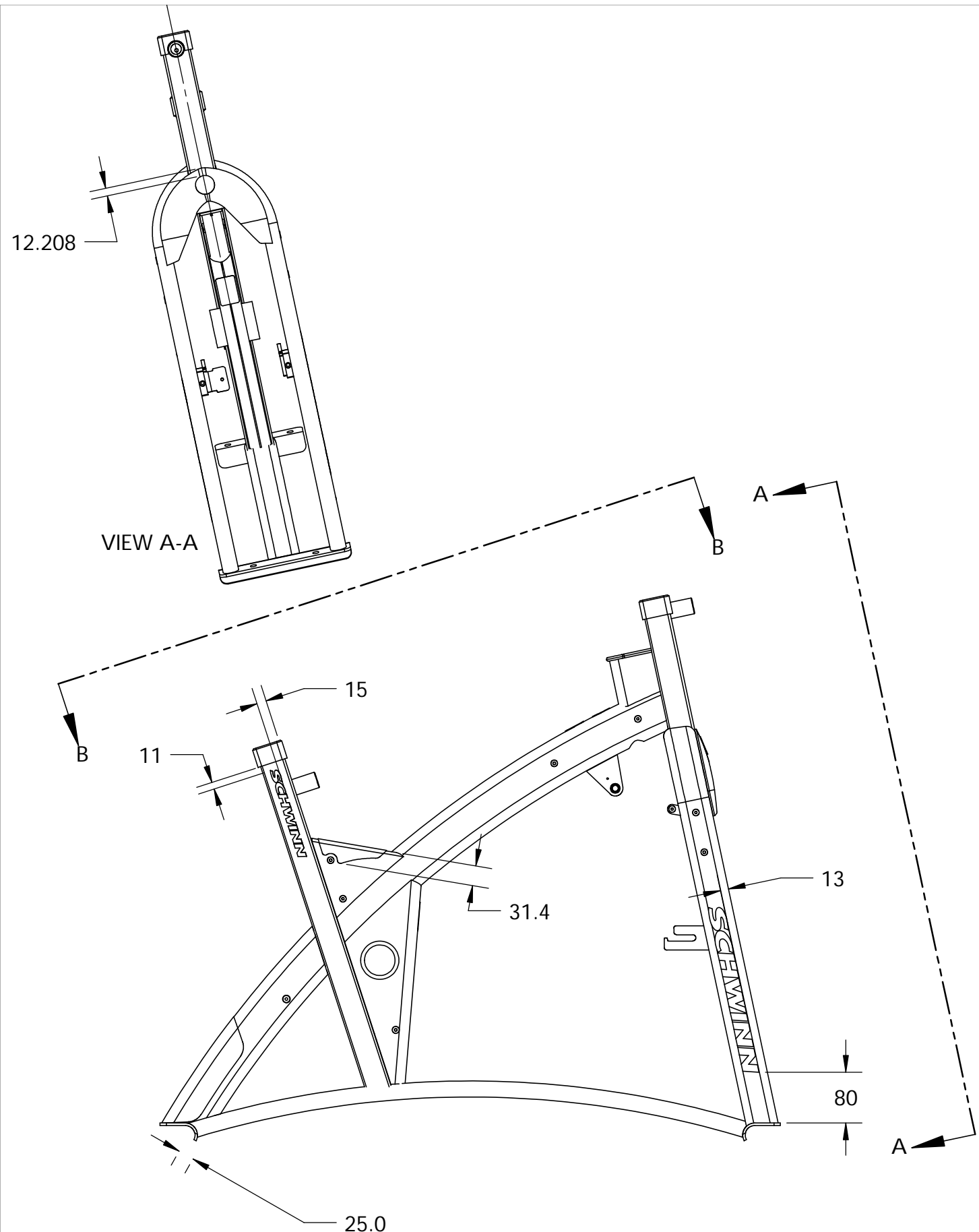
MODEL DESCRIPTION:  
**FRAME WLDMT ASSY**

3D MODEL: PALH: E:\stairmaster\assy\001-600\ 001-0772 REV. A

DRAWING: PALH: E:\stairmaster\assy\001-600\ 001-0772 REV. A

SCALE: 1:6 CONFIG: Default SIZE: B SHEET: 1 OF 2

REV.	DESCRIPTION	DATE	APPROVED
A	See SHEET 1 - BOM-EXPLODED	-	-



**PROPRIETARY AND CONFIDENTIAL**  
 THE INFORMATION CONTAINED IN THIS DRAWING IS THE SOLE PROPERTY OF STAIRMASTER OR CORE FITNESS. ANY REPRODUCTION IN PART OR AS A WHOLE WITHOUT THE WRITTEN PERMISSION OF STAIRMASTER OR CORE FITNESS IS PROHIBITED.

THIRD ANGLE PROJECTION:

PRIMARY DIMENSIONS GIVEN IN MILLIMETERS SECONDARY DIMENSIONS GIVEN IN INCHES. UNLESS OTHERWISE SPECIFIED MATCH 3D GEOMETRY ± TWO PLACE DECIMAL.

TOLERANCES:  
 ANGULAR: ± 1°  
 WHOLE MEASUREMENTS ± 1.  
 ONE PLACE DECIMAL ± .3  
 TWO PLACE DECIMAL ± .15

	NAME	DATE
ENG/DRW	J. WATT	10/27/2008
DRAWN	M. BIXBY	2/9/2009
ENG APPR.		
SERVICEABLE:		
MATERIAL:	SEE INDV PARTS	
COLOR:	SEE INDV PARTS	
FINISH:	SEE INDV PARTS	
VENDOR PN:		

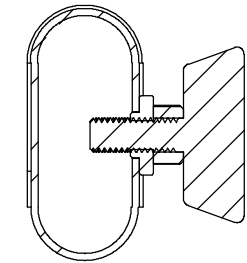
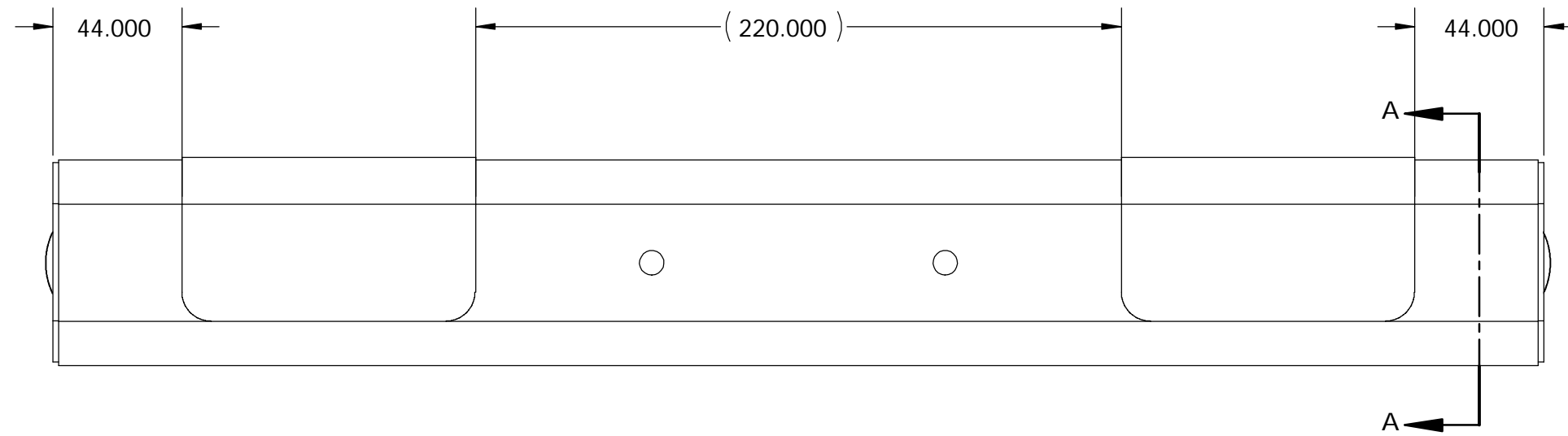
MODEL DESCRIPTION:  
**FRAME WLDMT ASSY**

3D MODEL: PALH: E:\stairmaster\boby\001-600\

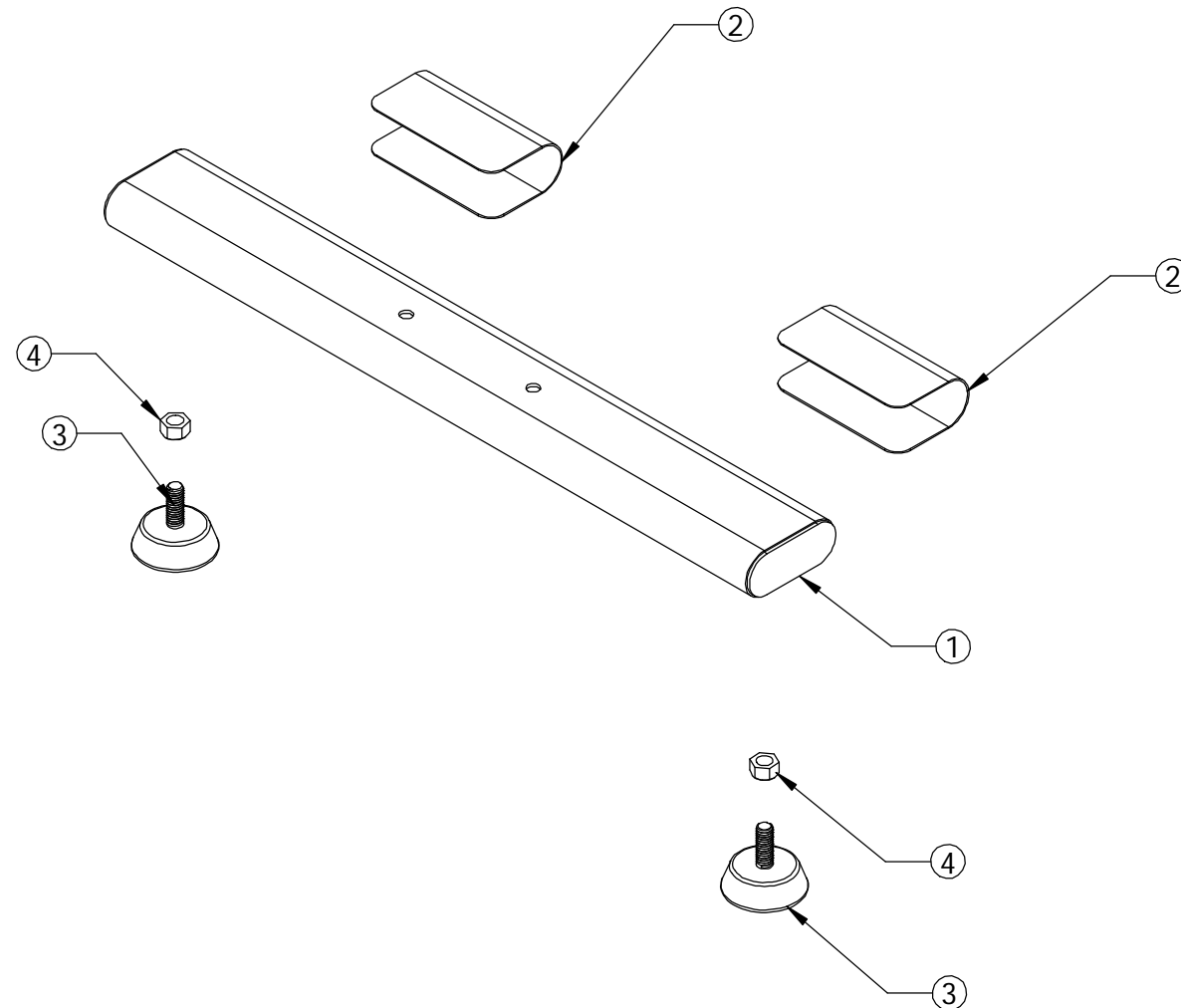
001-0772	REV. A
DRAWING: PALH: E:\stairmaster\boby\001-600\	REV. A
001-0772	REV. A

SCALE: 1:8 | CONFIG: Default | SIZE: B | SHEET: 2 OF 2

REV.	DESCRIPTION	DATE	APPROVED
A	RE-RELEASE AS STAIRMASTER PRODUCT	10/5/2011	MDB



SECTION A-A  
SCALE 1 : 2



ITEM NO.	PART NO.	QTY.	DESCRIPTION
1	001-0776	1	REAR STABILIZER WDMT, ASSY
2	003-5554	2	STRETCH PAD-REAR STABILIZER-STEEL FRAME
3	001-0595	2	STABILIZER FOOT - 3/8 - 16
4	902-2803	2	NUT-HEX 0375-16 SS

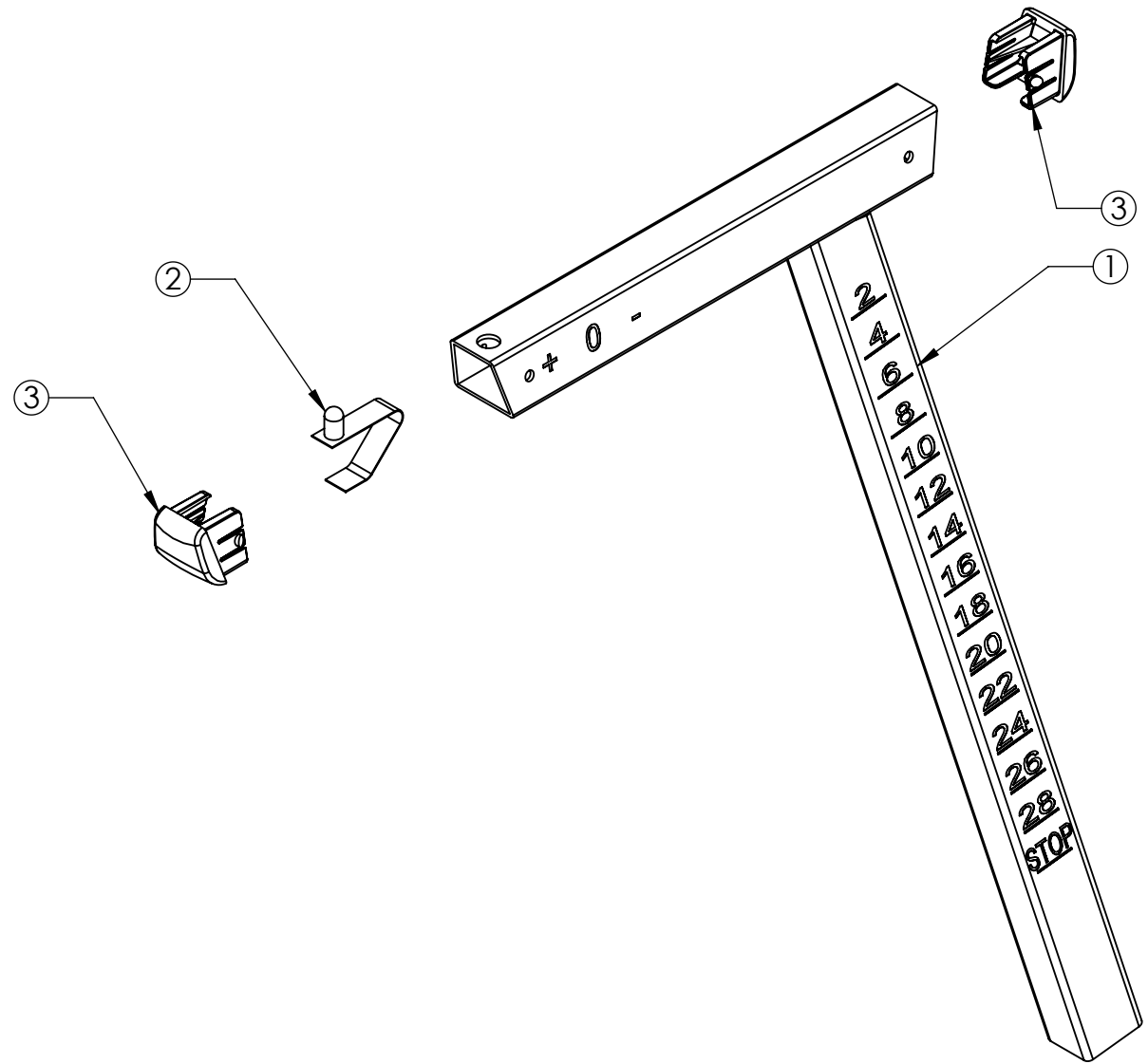
THIRD ANGLE PROJECTION		NAME	DATE
ENG/DRW	J.WATT	9/29/2008	
DRAWN	M. BIXBY	2/2/2009	
ENG APPR.			
SERVICEABLE:			
MATERIAL: SEE INDV PARTS		MODEL DESCRIPTION:	
COLOR: SEE INDV PARTS		REAR STABILIZER ASSY	
FINISH: SEE INDV PARTS		3D MODEL: PATH: E:\stairmaster\stairby\001-000\	
VENDOR PN:		DRAWING: PATH: E:\stairmaster\stairby\001-000\	
		SCALE: 1:5   CONFIG: Default   SIZE: B   SHEET: 1 OF 1	

PROPRIETARY AND CONFIDENTIAL  
THE INFORMATION CONTAINED IN THIS DRAWING IS THE SOLE PROPERTY OF STAIRMASTER OR CORE FITNESS. ANY REPRODUCTION IN PART OR AS A WHOLE WITHOUT THE WRITTEN PERMISSION OF STAIRMASTER OR CORE FITNESS IS PROHIBITED.

PRIMARY DIMENSIONS GIVEN IN MILLIMETERS SECONDARY DIMENSIONS GIVEN IN INCHES. UNLESS OTHERWISE SPECIFIED MATCH 3D GEOMETRY ± TWO PLACE DECIMAL.  
TOLERANCES:  
ANGULAR: ± 1°  
WHOLE MEASUREMENTS ± 1.  
ONE PLACE DECIMAL ± .3  
TWO PLACE DECIMAL ± .15



REVISIONS				
ECO	REVISION	REV DESCRIPTION	APPROVED	DATE
	A	RE-RELEASE AS STAIRMASTER	MDB	10/29/2011

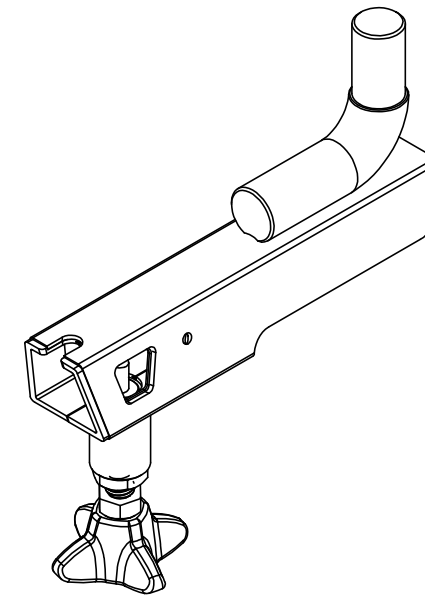
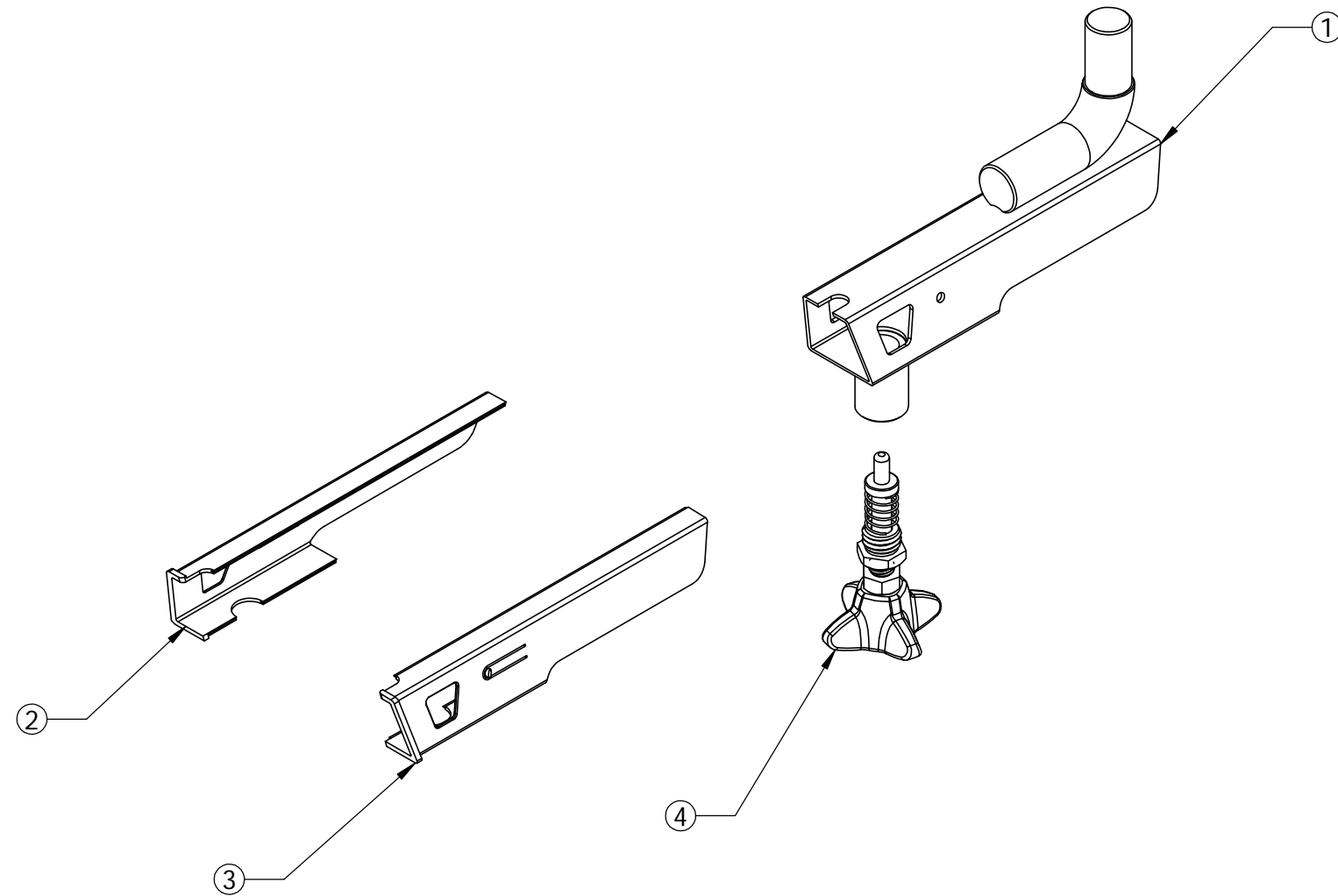


ITEM	PART NO.	QTY.	DESCRIPTION
1	002-2256	1	SEAT HEIGHT FORE/AFT WDMT-STEEL
2	001-0697	1	VALCO SNAP ASSEMBLY
3	002-2223	2	FORE/AFT INNER TUBE END CAP

**PROPRIETARY AND CONFIDENTIAL**  
 THE INFORMATION CONTAINED IN THIS DRAWING IS THE SOLE PROPERTY OF STAIRMASTER OR CORE FITNESS. ANY REPRODUCTION IN PART OR AS A WHOLE WITHOUT THE WRITTEN PERMISSION OF STAIRMASTER OR CORE FITNESS IS PROHIBITED.

THIRD ANGLE PROJECTION:		NAME	DATE	 <b>SEAT HEIGHT ASSY</b>
PRIMARY DIMENSIONS GIVEN IN MILLIMETERS SECONDARY DIMENSIONS GIVEN IN INCHES. UNLESS OTHERWISE SPECIFIED MATCH 3D GEOMETRY ±TWO PLACE DECIMAL.	ENG/DRW	J.WATT	9/9/2008	
TOLERANCES: ANGULAR: ± 1° WHOLE MEASUREMENTS ± 1. ONE PLACE DECIMAL ± .3 TWO PLACE DECIMAL ± .15	DRAWN	M. BIXBY	2/25/2009	
	ENG APPR.			
	SERVICEABLE:			3D MODEL: P:\3D\E:\stairmaster\assy\001-600\
	MATERIAL: SEE INDV PARTS			002-2257
	COLOR: SEE INDV PARTS			DRAWING: P:\3D\E:\stairmaster\bixby\001-600\
	FINISH: SEE INDV PARTS			002-2257
	VENDOR PN:			SCALE: 1:3 CONFIG:Default SIZE: B SHEET: 1 OF 1

REV.	DESCRIPTION	DATE	APPROVED
A	RE-RELEASE AS STAIRMASTER PRODUCT	10/4/2011	

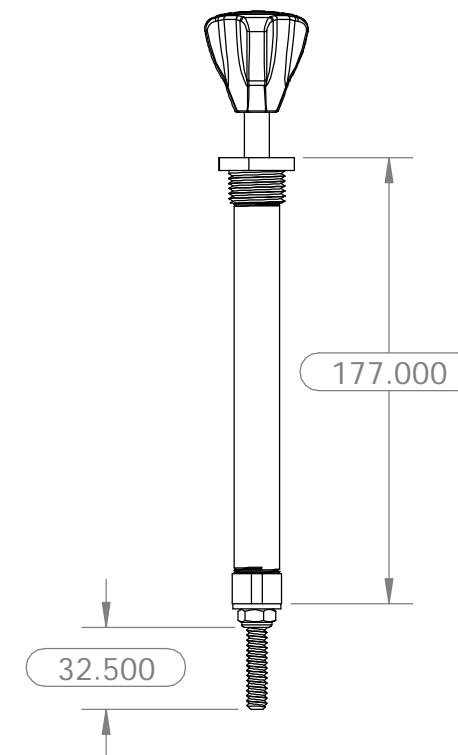
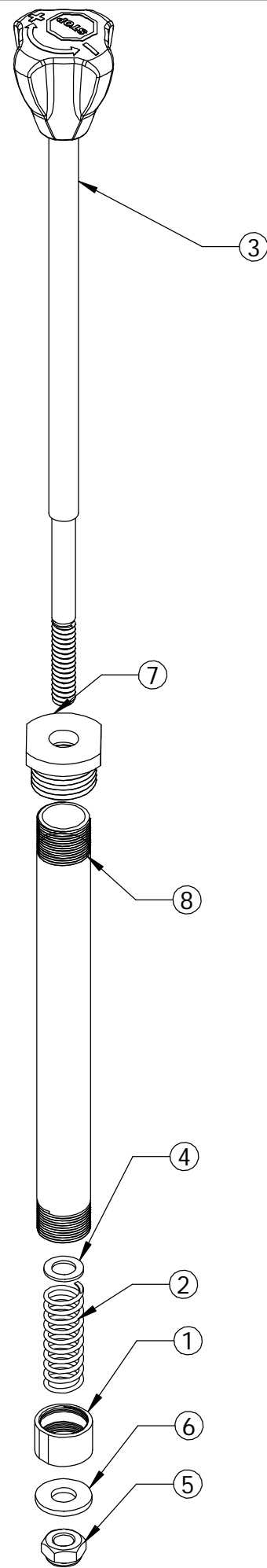


ITEM	PART NO.	QTY.	DESCRIPTION
1	002-2300	1	FORE/AFT WELDMENT-SEAT-ALUM
2	002-2295	1	SLEEVE, FORE/AFT LEFT
3	002-2301	1	FORE/AFT SLEEVE RIGHT
4	002-2265	1	POP PIN ASSY

THIRD ANGLE PROJECTION:	NAME	DATE	
MODELED	J.WATT	9/25/2008	
PRIMARY DIMENSIONS GIVEN IN MILLIMETERS SECONDARY DIMENSIONS GIVEN IN INCHES. UNLESS OTHERWISE SPECIFIED MATCH 3D GEOMETRY ±TWO PLACE DECIMAL.	DRAWN	C.WISHON	2/2/2009
TOLERANCES: ANGULAR: ± 1° WHOLE MEASUREMENTS ± 1. ONE PLACE DECIMAL ± .3 TWO PLACE DECIMAL ± .15	ENG APPR.		TITLE: <b>SEAT FORE/AFT ASSY</b>
	Q.A. APPR.		
	MATERIAL: SEE INDV PARTS		3D MODEL: P:\3d E:\stairmaster\002\001-4001
	COLOR:		002-2302
	FINISH:		DRAWING: P:\3d E:\stairmaster\002\001-4001
			002-2302
			SCALE: 1:3
			SIZE: B SHEET: 1 OF 1


PROPRIETARY AND CONFIDENTIAL  
THE INFORMATION CONTAINED IN THIS DRAWING IS THE SOLE PROPERTY OF STAIRMASTER OR CORE FITNESS. ANY REPRODUCTION IN PART OR AS A WHOLE WITHOUT THE WRITTEN PERMISSION OF STAIRMASTER OR CORE FITNESS IS PROHIBITED.

REV.	DESCRIPTION	DATE	APPROVED
A	DRAWING RELEASE	9/15/2011	MDB



ITEM	PART NO.	QTY.	DESCRIPTION
1	001-0530	1	CAP, BRAKE ADJUSTMENT HOUSING
2	001-0531	1	SPRING, BRAKE ADJUSTMENT
3	001-0533	1	BRAKE ADJUSTMENT KNOB ASSY
4	001-0537	1	WASHER, BRAKE ADJUSTMENT SRPING
5	001-0787	1	M8 P2.0-L7.5-2 STAINLESS NYLOCK NUT
6	001-0788	1	SPACER BRAKE ADJUSTMENT KNOB STAINLESS
7	001-0785	1	CAP COARSE, BRAKE ADJUSTMENT HOUSING TOP
8	001-0784	1	HOUSING, BRAKE ADJUSTMENT KNOB TUBE

**PROPRIETARY AND CONFIDENTIAL**  
 THE INFORMATION CONTAINED IN THIS DRAWING IS THE SOLE PROPERTY OF STAIRMASTER OR CORE FITNESS. ANY REPRODUCTION IN PART OR AS A WHOLE WITHOUT THE WRITTEN PERMISSION OF STAIRMASTER OR CORE FITNESS IS PROHIBITED.

THIRD ANGLE PROJECTION:	NAME	DATE	
PRIMARY DIMENSIONS GIVEN IN MILLIMETERS SECONDARY DIMENSIONS GIVEN IN INCHES. UNLESS OTHERWISE SPECIFIED MATCH 3D GEOMETRY ± TWO PLACE DECIMAL.	ENG/DRW	J.WATT 6/18/2008	
TOLERANCES: ANGULAR: ± 1° WHOLE MEASUREMENTS ± 1. ONE PLACE DECIMAL ± .3 TWO PLACE DECIMAL ± .15	DRAWN	M. BIXBY 2/22/2009	
	ENG APPR.		
	SERVICEABLE:		MODEL DESCRIPTION: <b>BRAKE ADJ.T KNOB, COARSE THREAD ASSY</b>
	MATERIAL: --		3D MODEL: PA3H E:\stairmaster\bixby\001-6001
	COLOR: --		005-0001
	FINISH: --		DRAWING: PA3H E:\stairmaster\bixby\001-6001
	VENDOR PN:		005-0001
			SCALE: 1:3 CONFIG: Default
			SIZE: B SHEET: 1 OF 1

REV. A  
REV. A