

A



②



B

B

- B

A $\langle F \rangle$  $\langle F \rangle$ 

	F
--	---

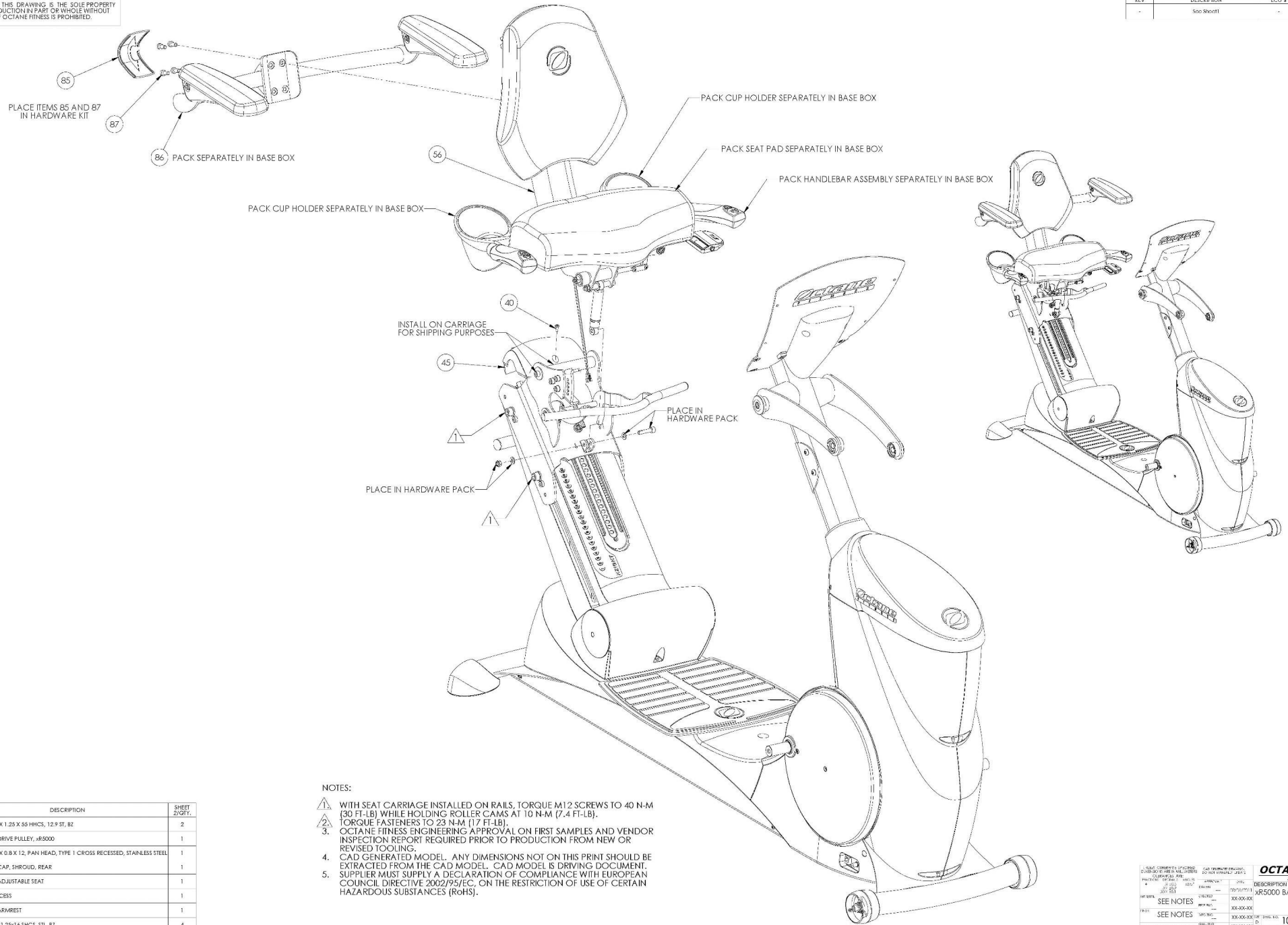
A

WITH SEAT CARGO INSTALLED ON RAILS, TORQUE M12 SCREWS TO 40 N-M (30 FT-LB) WHILE HOLDING ROLLER CAMS AT 10 N-M (7.2 FT-LB). TORQUE FASTENERS TO 23 N-M (17 FT-LB).

4. FITNESS ENGINEER MUST SIGN OFF ON FIRST SAMPLES AND VENDOR INSPECTION REPORT REQUIRED PRIOR TO PRODUCTION FROM NEW OR REVISED TOOLING.

4.4. CAD MODEL. ANY DIMENSIONS NOT ON THIS PRINT SHOULD BE EXTRACTED FROM THE CAD MODEL. CAD MODEL IS DRIVING DOCUMENT. SUPPLIER MUST SUPPLY A DECLARATION OF COMPLIANCE WITH EUROPEAN DIRECTIVE 2002/95/EC ON THE RESTRICTION OF USE OF CERTAIN HAZARDOUS SUBSTANCES (ROHS).

1. ALL COMPANIES LISTED ORDERED TO ARE IN MAJORS COLUMBIAN AIR		2. ALL COMPANIES LISTED ORDERED TO ARE IN MAJORS COLUMBIAN AIR		<b>OCTANE FITNESS</b> <i>Fuel Your Life</i>	
FACTORY 100% 100% 100%	100% 100% 100%	100% 100% 100%	100% 100% 100%	100% 100% 100%	DESCRIPTION xr5000 BASE
100% 100% 100%	100% 100% 100%	100% 100% 100%	100% 100% 100%	100% 100% 100%	100% 100% 100%
100% 100% 100%	100% 100% 100%	100% 100% 100%	100% 100% 100%	100% 100% 100%	100% 100% 100%
100% 100% 100%	100% 100% 100%	100% 100% 100%	100% 100% 100%	100% 100% 100%	100% 100% 100%
100% 100% 100%	100% 100% 100%	100% 100% 100%	100% 100% 100%	100% 100% 100%	100% 100% 100%
100% 100% 100%	100% 100% 100%	100% 100% 100%	100% 100% 100%	100% 100% 100%	100% 100% 100%
100% 100% 100%	100% 100% 100%	100% 100% 100%	100% 100% 100%	100% 100% 100%	100% 100% 100%
100% 100% 100%	100% 100% 100%	100% 100% 100%	100% 100% 100%	100% 100% 100%	100% 100% 100%
100% 100% 100%	100% 100% 100%	100% 100% 100%	100% 100% 100%	100% 100% 100%	100% 100% 100%
100% 100% 100%	100% 100% 100%	100% 100% 100%	100% 100% 100%	100% 100% 100%	100% 100% 100%
100% 100% 100%	100% 100% 100%	100% 100% 100%	100% 100% 100%	100% 100% 100%	100% 100% 100%
100% 100% 100%	100% 100% 100%	100% 100% 100%	100% 100% 100%	100% 100% 100%	100% 100% 100%
100% 100% 100%	100% 100% 100%	100% 100% 100%	100% 100% 100%	100% 100% 100%	100% 100% 100%
100% 100% 100%	100% 100% 100%	100% 100% 100%	100% 100% 100%	100% 100% 100%	100% 100% 100%
100% 100% 100%	100% 100% 100%	100% 100% 100%	100% 100% 100%	100% 100% 100%	100% 100% 100%
100% 100% 100%	100% 100% 100%	100% 100% 100%	100% 100% 100%	100% 100% 100%	100% 100% 100%
100% 100% 100%	100% 100% 100%	100% 100% 100%	100% 100% 100%	100% 100% 100%	100% 100% 100%
100% 100% 100%	100% 100% 100%	100% 100% 100%	100% 100% 100%	100% 100% 100%	100% 100% 100%
100% 100% 100%	100% 100% 100%	100% 100% 100%	100% 100% 100%	100% 100% 100%	100% 100% 100%
100% 100% 100%	100% 100% 100%	100% 100% 100%	100% 100% 100%	100% 100% 100%	100% 100% 100%
100% 100% 100%	100% 100% 100%	100% 100% 100%	100% 100% 100%	100% 100% 100%	100% 100% 100%
100% 100% 100%	100% 100% 100%	100% 100% 100%	100% 100% 100%	100% 100% 100%	100% 100% 100%
100% 100% 100%	100% 100% 100%	100% 100% 100%	100% 100% 100%	100% 100% 100%	100% 100% 100%
100% 100% 100%	100% 100% 100%	100% 100% 100%	100% 100% 100%	100% 100% 100%	100% 100% 100%
100% 100% 100%	100% 100% 100%	100% 100% 100%	100% 100% 100%	100% 100% 100%	100% 100% 100%
100% 100% 100%	100% 100% 100%	100% 100% 100%	100% 100% 100%	100% 100% 100%	100% 100% 100%
100% 100% 100%	100% 100% 100%	100% 100% 100%	100% 100% 100%	100% 100% 100%	100% 100% 100%
100% 100% 100%	100% 100% 100%	100% 100% 100%	100% 100% 100%	100% 100% 100%	100% 100% 100%
100% 100% 100%	100% 100% 100%	100% 100% 100%	100% 100% 100%	100% 100% 100%	100% 100% 100%
100% 100% 100%	100% 100% 100%	100% 100% 100%	100% 100% 100%	100% 100% 100%	100% 100% 100%
100% 100% 100%	100% 100% 100%	100% 100% 100%	100% 100% 100%	100% 100% 100%	100% 100% 100%
100% 100% 100%	100% 100% 100%	100% 100% 100%	100% 100% 100%	100% 100% 100%	100% 100% 100%
100% 100% 100%	100% 100% 100%	100% 100% 100%	100% 100% 100%	100% 100% 100%	100% 100% 100%
100% 100% 100%	100% 100% 100%	100% 100% 100%	100% 100% 100%	100% 100% 100%	100% 100% 100%
100% 100% 100%	100% 100% 100%	100% 100% 100%	100% 100% 100%	100% 100% 100%	100% 100% 100%
100% 100% 100%	100% 100% 100%	100% 100% 100%	100% 100% 100%	100% 100% 100%	100% 100% 100%
100% 100% 100%	100% 100% 100%	100% 100% 100%	100% 100% 100%	100% 100% 100%	100% 100% 100%
100% 100% 100%	100% 100% 100%	100% 100% 100%	100% 100% 100%	100% 100% 100%	100% 100% 100%
100% 100% 100%	100% 100% 100%	100% 100% 100%	100% 100% 100%	100% 100% 100%	100% 100% 100%
100% 100% 100%	100% 100% 100%	100% 100% 100%	100% 100% 100%	100% 100% 100%	100% 100% 100%
100% 100% 100%	100% 100% 100%	100% 100% 100%	100% 100% 100%	100% 100% 100%	100% 100% 100%
100% 100% 100%	100% 100% 100%	100% 100% 100%	100% 100% 100%	100% 100% 100%	100% 100% 100%
100% 100% 100%	100% 100% 100%	100% 100% 100%	100% 100% 100%	100% 100% 100%	100% 100% 100%
100% 100% 100%	100% 100% 100%	100% 100% 100%	100% 100% 100%	100% 100% 100%	100% 100% 100%
100% 100% 100%	100% 100% 100%	100% 100% 100%	100% 100% 100%	100% 100% 100%	100% 100% 100%
100% 100% 100%	100% 100% 100%	100% 100% 100%	100% 100% 100%	100% 100% 100%	100% 100% 100%
100% 100% 100%	100% 100% 100%	100% 100% 100%	100% 100% 100%	100% 100% 100%	100% 100% 100%
100% 100% 100%	100% 100% 100%	100% 100% 100%	100% 100% 100%	100% 100% 100%	100% 100% 100%
100% 100% 100%	100% 100% 100%	100% 100% 100%	100% 100% 100%	100% 100% 100%	100% 100% 100%
100% 100% 100%	100% 100% 100%	100% 100% 100%	100% 100% 100%	100% 100% 100%	100% 100% 100%
100% 100% 100%	100% 100% 100%	100% 100% 100%	100% 100% 100%	100% 100% 100%	100% 100% 100%
100% 100% 100%	100% 100% 100%	100% 100% 100%	100% 100% 100%	100% 100% 100%	100% 100% 100%
100% 100% 100%	100% 100% 100%	100% 100% 100%	100% 100% 100%	100% 100% 100%	100% 100% 100%
100% 100% 100%	100% 100% 100%	100% 100% 100%	100% 100% 100%	100% 100% 100%	100% 100% 100%
100% 100% 100%	100% 100% 100%	100% 100% 100%	100% 100% 100%	100% 100% 100%	100% 100% 100%
100% 100% 100%	100% 100% 100%	100% 100% 100%	100% 100% 100%	100% 100% 100%	100% 100% 100%
100% 100% 100%	100% 100% 100%	100% 100% 100%	100% 100% 100%	100% 100% 100%	100% 100% 100%
100% 100% 100%	100% 100% 100%	100% 100% 100%	100% 100% 100%	100% 100% 100%	100% 100% 100%
100% 100% 100%	100% 100% 100%	100% 100% 100%	100% 100% 100%	100% 100% 100%	100% 100% 100%
100% 100% 100%	100% 100% 100%	100% 100% 100%	100% 100% 100%	100% 100% 100%	100% 100% 100%
100% 100% 100%	100% 100% 100%	100% 100% 100%	100% 100% 100%	100% 100% 100%	100% 100% 100%
100% 100% 100%	100% 100% 100%	100% 100% 100%	100% 100% 100%	100% 100% 100%	100% 100% 100%
100% 100% 100%	100% 100% 100%	100% 100% 100%	100% 100% 100%	100% 100% 100%	100% 100% 100%
100% 100% 100%	100% 100% 100%	100% 100% 100%	100% 100% 100%	100% 100% 100%	100% 100% 100%
100% 100% 100%	100% 100% 100%	100% 100% 100%	100% 100% 100%	100% 100% 100%	100% 100% 100%
100% 100% 100%	100% 100% 100%	100% 100% 100%	100% 100% 100%	100% 100% 100%	100% 100% 100%
100% 100% 100%	100% 100% 100%	100% 100% 100%	100% 100% 100%	100% 100% 100%	100% 100% 100%
100% 100% 100%	100% 100% 100%	100% 100% 100%	100% 100% 100%	100% 100% 100%	100% 1



ITEM	PART NUMBER	DESCRIPTION	SHEET 3/QT.
17	107005-001	SCREW, M8 X 1.25 X 55 PHCS, 12.9 ST, BZ	2
22	108594-001	ASSEMBLY, DRIVE PULLEY, XR5000	1
40	100780-001	SCREW, M5 X 0.8 X 12, PAN HEAD, TYPE 1 CROSS RECESSED, STAINLESS STEEL	37
41	102431-001	PANEL, LEFT ARM LINK	1
42	102432-001	PANEL, RIGHT ARM LINK	1
43	102236-001	COVER, CRANK ARM	2
44	102258-001	COVER, MAST BOOT	1
46	106218-001	ASSEMBLY, SEAT SLIDE COVER, XR5000	1
47	103317-001	ASSEMBLY, SHROUD ACCESS PANEL	1
48	103071-001	ASSEMBLY, SHROUD, MIDSECTION	1
49	102263-001	SHROUD, REAR, LEFT	1
50	103049-001	ASSEMBLY, LEFT ARM LINK COVER	1
51	103294-001	ASSEMBLY, RIGHT ARM LINK COVER	1
52	102814-001	ASSEMBLY, SHROUD FRONT TOP	1
53	102264-001	SHROUD, REAR, RIGHT	1
54	103315-001	ASSEMBLY, LEFT FRONT SHROUD - FLARE	1
55	103314-001	ASSEMBLY, RIGHT FRONT SHROUD - FLARE	1
88	103281-001	CABLE, CO-AXIAL, BASE	1

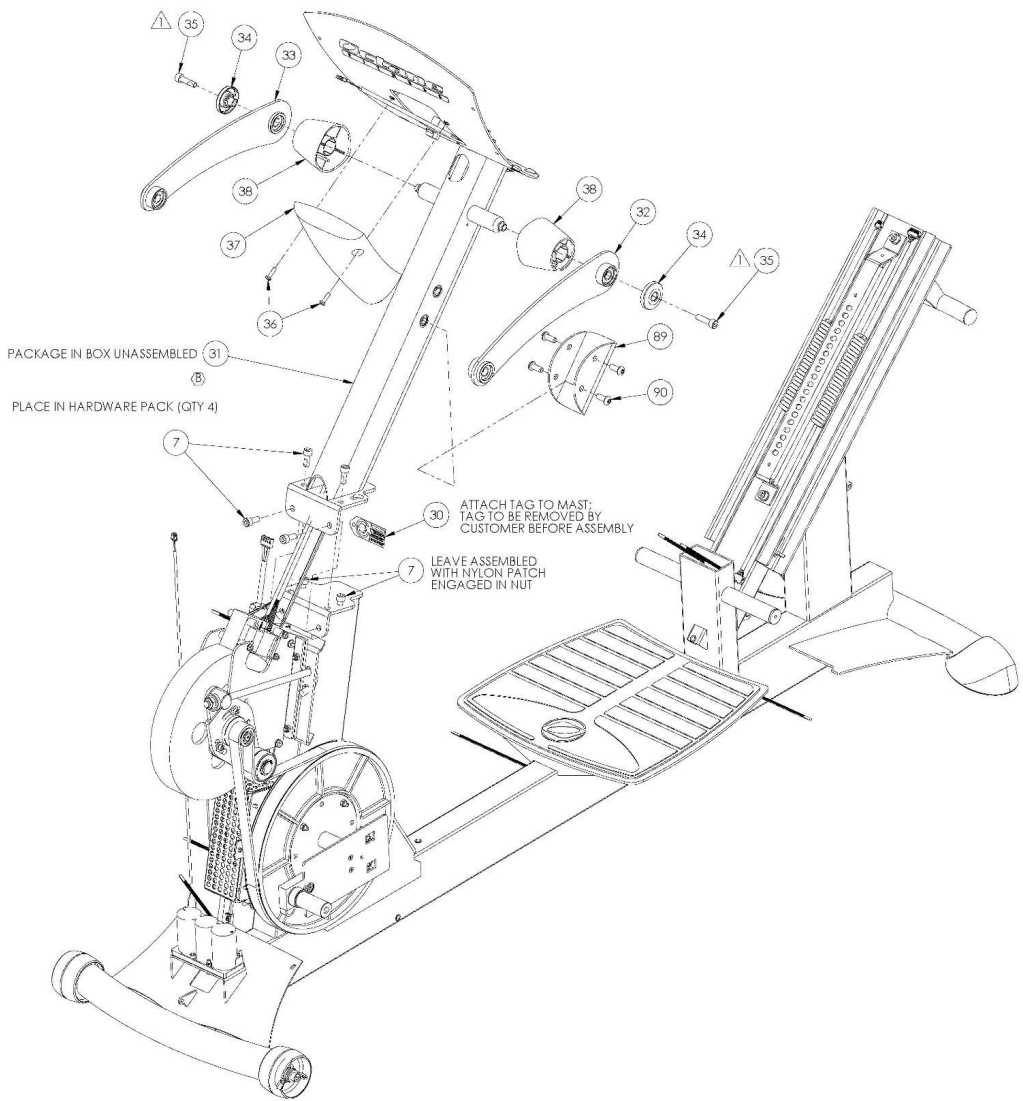
NOTES:

1. TORQUE FASTENERS TO 2 - 3 N·M (17 - 26 IN·LB).
2. ALL FASTENERS SHOWN IN EXPLODED STATE ARE PART NUMBER 100780-001, OCTANE FITNESS ENGINEERING APPROVAL ON FIRST SAMPLES AND VENDOR INSPECTION REPORT REQUIRED PRIOR TO PRODUCTION FROM NEW OR REVISED TOOLING.
3. CAD GENERATED MODEL. ANY DIMENSIONS NOT ON THIS PRINT SHOULD BE EXTRACTED FROM THE CAD MODEL. CAD MODEL IS DRIVING DOCUMENT.
4. SUPPLIER MUST SUPPLY A DECLARATION OF COMPLIANCE WITH EUROPEAN COUNCIL DIRECTIVE 2002/95/EC, ON THE RESTRICTION OF USE OF CERTAIN HAZARDOUS SUBSTANCES (RoHS).

REV	DESCRIPTION	ECO #	DATE	ENG
-	See Sheet 1	-	-	-

ITEM	DESCRIPTION	QTY	UNIT
1	XR5000 BASE	1	EA
2	XR5000 BASE	1	EA
3	XR5000 BASE	1	EA
4	XR5000 BASE	1	EA
5	XR5000 BASE	1	EA
6	XR5000 BASE	1	EA
7	XR5000 BASE	1	EA
8	XR5000 BASE	1	EA
9	XR5000 BASE	1	EA
10	XR5000 BASE	1	EA
11	XR5000 BASE	1	EA
12	XR5000 BASE	1	EA
13	XR5000 BASE	1	EA
14	XR5000 BASE	1	EA
15	XR5000 BASE	1	EA
16	XR5000 BASE	1	EA
17	XR5000 BASE	1	EA
18	XR5000 BASE	1	EA
19	XR5000 BASE	1	EA
20	XR5000 BASE	1	EA
21	XR5000 BASE	1	EA
22	XR5000 BASE	1	EA
23	XR5000 BASE	1	EA
24	XR5000 BASE	1	EA
25	XR5000 BASE	1	EA
26	XR5000 BASE	1	EA
27	XR5000 BASE	1	EA
28	XR5000 BASE	1	EA
29	XR5000 BASE	1	EA
30	XR5000 BASE	1	EA
31	XR5000 BASE	1	EA
32	XR5000 BASE	1	EA
33	XR5000 BASE	1	EA
34	XR5000 BASE	1	EA
35	XR5000 BASE	1	EA
36	XR5000 BASE	1	EA
37	XR5000 BASE	1	EA
38	XR5000 BASE	1	EA
39	XR5000 BASE	1	EA
40	XR5000 BASE	1	EA
41	XR5000 BASE	1	EA
42	XR5000 BASE	1	EA
43	XR5000 BASE	1	EA
44	XR5000 BASE	1	EA
45	XR5000 BASE	1	EA
46	XR5000 BASE	1	EA
47	XR5000 BASE	1	EA
48	XR5000 BASE	1	EA
49	XR5000 BASE	1	EA
50	XR5000 BASE	1	EA
51	XR5000 BASE	1	EA
52	XR5000 BASE	1	EA
53	XR5000 BASE	1	EA
54	XR5000 BASE	1	EA
55	XR5000 BASE	1	EA
56	XR5000 BASE	1	EA
57	XR5000 BASE	1	EA
58	XR5000 BASE	1	EA
59	XR5000 BASE	1	EA
60	XR5000 BASE	1	EA
61	XR5000 BASE	1	EA
62	XR5000 BASE	1	EA
63	XR5000 BASE	1	EA
64	XR5000 BASE	1	EA
65	XR5000 BASE	1	EA
66	XR5000 BASE	1	EA
67	XR5000 BASE	1	EA
68	XR5000 BASE	1	EA
69	XR5000 BASE	1	EA
70	XR5000 BASE	1	EA
71	XR5000 BASE	1	EA
72	XR5000 BASE	1	EA
73	XR5000 BASE	1	EA
74	XR5000 BASE	1	EA
75	XR5000 BASE	1	EA
76	XR5000 BASE	1	EA
77	XR5000 BASE	1	EA
78	XR5000 BASE	1	EA
79	XR5000 BASE	1	EA
80	XR5000 BASE	1	EA
81	XR5000 BASE	1	EA
82	XR5000 BASE	1	EA
83	XR5000 BASE	1	EA
84	XR5000 BASE	1	EA
85	XR5000 BASE	1	EA
86	XR5000 BASE	1	EA
87	XR5000 BASE	1	EA
88	XR5000 BASE	1	EA
89	XR5000 BASE	1	EA
90	XR5000 BASE	1	EA
91	XR5000 BASE	1	EA
92	XR5000 BASE	1	EA
93	XR5000 BASE	1	EA
94	XR5000 BASE	1	EA
95	XR5000 BASE	1	EA
96	XR5000 BASE	1	EA
97	XR5000 BASE	1	EA
98	XR5000 BASE	1	EA
99	XR5000 BASE	1	EA
100	XR5000 BASE	1	EA

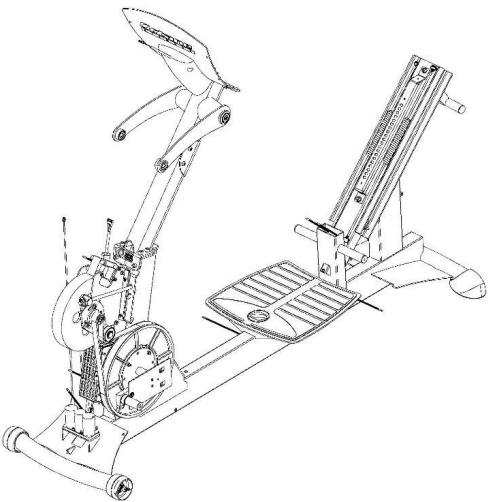
REV	DESCRIPTION	ECO #	DATE	ENG
-	See Sheet 1	-	-	-



ITEM	PART NUMBER	DESCRIPTION	SHEET AMT.
7	101295-001	SCREW, M6 X 1.25 X 20.0L SHCS, BLACK ZINC, 12.9 STL	2
17	107005-001	SCREW, M6 X 1.25 X 55 FHCS, 12.9 ST, BZ	6
22	108594-001	ASSEMBLY, DRIVE PULLEY, xR5000	1
30	103037-001	TAG, TIGHTEN SECURELY, 30 H-IN.	1
31	105838-001	ASSEMBLY, MAST, xR5000	1
32	105712-001	ASSEMBLY, UPPER LINK, LEFT	1
33	105710-001	ASSEMBLY, UPPER LINK, RIGHT	1
34	105716-001	CAP, UPPER LINK	4
35	105717-001	SCREW, M6 X 1.25 X 30.0L SHCS, STAINLESS STEEL	4
36	102134-001	SCREW, M6 X 0.6 X 1.6, PAN HEAD, TYPE 1 CROSS RECESSED, SS	2
37	100461-001	COVER, CONSOLE BACK	1
38	102413-001	COVER, AXLE MAST	2
89	101572-001	BRACKET, UPRIGHT, LCD ARM	1
90	101577-001	SCREW, M6 X 1.25 X 20, SHCS, STAINLESS STEEL	4

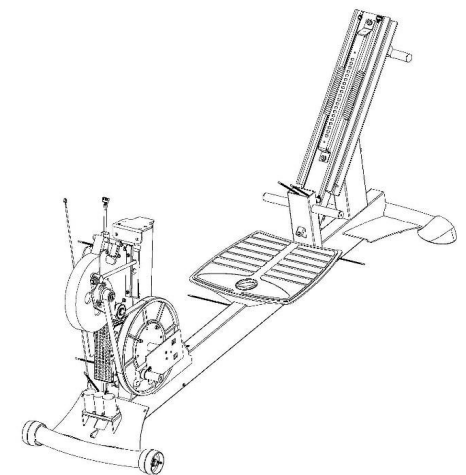
NOTES:

1. TORQUE FASTENER TO 15 N-M (11 FT-LB).
2. OCTANE FINISH ENGINEERING APPROVAL ON FIRST SAMPLES AND VENDOR INSPECTION REPORT REQUIRED PRIOR TO PRODUCTION FROM NEW OR REVISED TOOLING.
3. CAD GENERATED MODEL. ANY DIMENSIONS NOT ON THIS PRINT SHOULD BE EXTRACTED FROM THE CAD MODEL. CAD MODEL IS DRIVING DOCUMENT.
4. SUPPLIER MUST SUPPLY A DECLARATION OF COMPLIANCE WITH EUROPEAN COUNCIL DIRECTIVE 2002/95/EC, ON THE RESTRICTION OF USE OF CERTAIN HAZARDOUS SUBSTANCES (RoHS).



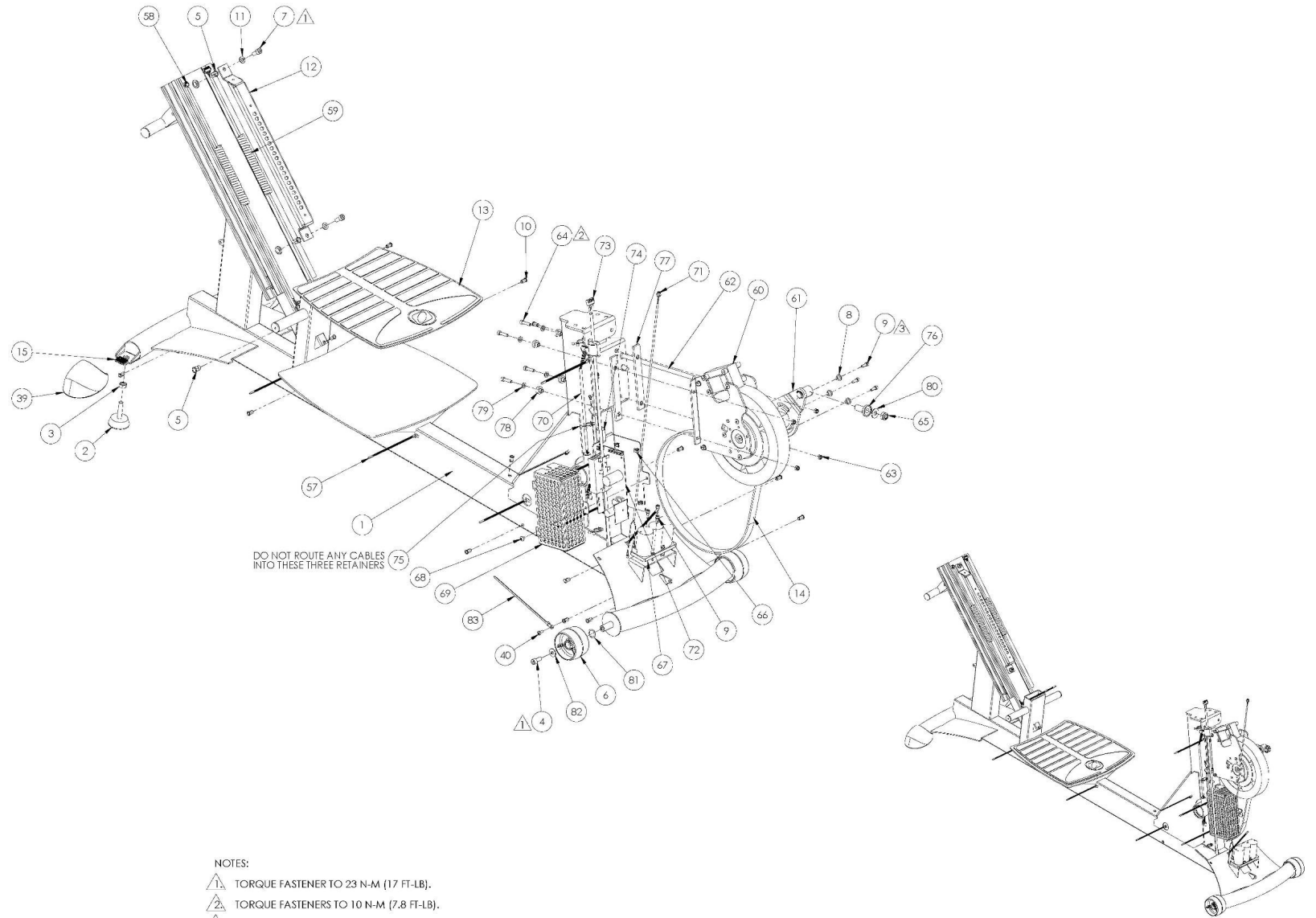
ALL CHIMNEY'S SPECIFIED (CHIMNEY-DO NOT REMOVE)		DO NOT REMOVE CHIMNEY! DO NOT REMOVE CHIMNEY!		<b>OCTANE FITNESS</b> <i>Fuel Your Life</i>	
PRACTICE OF THE ARTS AND THE ARTS AND THE ARTS		2000-2001 2001-2002		DESCRIPTION XR5000 BASE	
SEE NOTES		CHECKED 2001-2002		105840-001	
SEE NOTES		2001-2002 2001-2002		105840-001	
DO NOT REMOVE CHIMNEY!		2001-2002 2001-2002		105840-001	

5. CAD GENERATED MODEL. ANY DIMENSIONS NOT ON THIS PRINT SHOULD BE EXTRACTED FROM THE CAD MODEL. CAD MODEL IS DRIVING DOCUMENT.
6. SUPPLIER MUST SUPPLY A DECLARATION OF COMPLIANCE WITH EUROPEAN COUNCIL DIRECTIVE 2002/95/EC, ON THE RESTRICTION OF USE OF CERTAIN HAZARDOUS SUBSTANCES (RoHS).

[illegible]

Fuel Your Life

FA	PART NUMBER	DESCRIPTION	SHEET #/QTY.
1	105839-001	WLDMT, FRAME, #R5000	1
2	900015-001	LEVELER, 50MM DIAMETER	2
3	9500309-009	#18.2-1.1M, HEX NUT, STYLE 1, M10 X 1.5, BLACK ING, STL	2
4	103210-001	SCREW, M8 X 1.25 X 20.0L SHCS, STAINLESS STEEL	2
5	101576-001	RIVNUT, BRASS, M8 X 1.25	4
6	102219-001	POLLER, TRANSPORT	2
7	101295-001	SCREW, M8 X 1.25 X 20.0L SHCS, BLACK ZNC, 12.9 STL	2
8	100457-001	SPACER, FLANGE TENSIONER	3
9	101297-001	SCREW, M5 X 0.8 X 1.6 L SHCS, BLACK ZNC, 12.9 STL, SPRING WASHER	14
10	900031-002	RIVNUT, BRASS, M5 X 0.8	6
11	101020-001	WASHER, M6, 8.3 X 1.6 O X 1.6, ST, BZ	14
12	102155-001	RACK, SEAT LEADE	1
13	102262-001	TREAD, PLATFORM	1
14	103433-001	BELT, DRIVE, R 8R, 490J	1
15	101300-001	DUAL LOCK, 25 X 20 - 400	2
17	107005-001	SCREW, M8 X 1.25 X 5.5 HHCS, 12.9 ST, BZ	2
22	108594-001	ASSEMBLY, DRIVE PULLEY, #R5000	1
39	102979-001	ASSEMBLY, END CAP	2
40	100780-001	SCREW, M5 X 0.8 X 12, PAN HEAD, TYPE 1 CROSS RECESSED, STAINLESS STEEL	41
57	103432-001	TE, CABLE, PUSH MOUNT, W 4.8 X L170	11
58	103306-001	CABLE HR BASE BOX	1
59	103296-001	CABLE, HANDLEBAR BUTTONS	1
60	100830-001	BRAKE, GENERATOR, 6302	1
61	103531-001	ASSEMBLY, TENSIONER, INSULATED	1
62	102794-001	BOLT, 10MM J-HOOK	1
63	950046-007	NUT, HEX, NYLON IN-BERT, STL, M6	4
64	103596-001	SCREW, M6 X 1.0 X 25, SHCS, BZ	4
65	950046-009	NUT, HEX, NYLON IN-BERT, STL, M10	1
66	102583-001	STAND-OFF, BOARD, 48MM	4
67	101823-001	ASSEMBLY, BATTERY WITH PIN	1
69	103193-001	COVER, BRAKE PCB	1
70	105162-001	CABLE ASSY, BASE, #R6000, FERRITE	1
71	103282-001	CABLE ASSEMBLY, BATTERY TO MAST	1
72	103331-001	CIRCUIT BOARD ASSEMBLY, BRAKE CONTROL BOARD, SAFETY CERT, ROPS	1
73	105140-001	CABLE ASSY, BRAKE GEN PWR, FERRITE	1
74	105141-001	CABLE ASSY, BRAKE GEN INDUCT, FERRITE	1
75	102892-001	STAND-OFF, CABLE, 14 DIA	3
76	103533-001	INSULATOR, J-HOOK SLOT	1
77	103428-001	INSULATOR, BRAKE BASE	2
78	103534-001	INSULATOR, BRAKE BOLT	4
79	950042-007	#18.22MM, WASHER, PLAIN, STL, M6	4
80	100717-001	10 X 23 X 2, STEEL, CZ	1
81	101920-001	WASHER, WAVE, 16.7 X 22.5 X .3	2
82	104302-001	WASHER, M6, 8.3 X 20 X 2, STAINLESS STEEL	2
83	101416-001	CABLE TE, SCREW MOUNT, M5	1



- NOTES:
1. TORQUE FASTENER TO 23 N-M (17 FT-LB).
  2. TORQUE FASTENERS TO 10 N-M (7.8 FT-LB).
  3. TORQUE FASTENERS TO 6 N-M (4.6 FT-LB).
  4. OCTANE FITNESS ENGINEERING APPROVAL ON FIRST SAMPLES AND VENDOR INSPECTION REPORT REQUIRED PRIOR TO PRODUCTION FROM NEW OR REVISED TOOLING.
  5. CAD GENERATED MODEL. ANY DIMENSIONS NOT ON THIS PRINT SHOULD BE EXTRACTED FROM THE CAD MODEL. CAD MODEL IS DRIVING DOCUMENT.
  6. STUDY MUST SUPPORT A DECLARATION OF COMPLIANCE WITH EUROPEAN COUNCIL DIRECTIVE 2002/95/EC, ON THE RESTRICTION OF USE OF CERTAIN HAZARDOUS SUBSTANCES (RoHS).

[illegible]